



237 S. 70<sup>th</sup> Street, Ste. 221, Lincoln, NE 68510 \* 402.476.0359

**OFFICE HOURS: Virtual Office through April 30, 2020** – Updated as needed.

e-mail Carol: [adminasst@ccnebr.org](mailto:adminasst@ccnebr.org)

e-mail Chris: [regmin@ccnebr.org](mailto:regmin@ccnebr.org)

**Christian Church in Nebraska**

**eUpdate:** Keeping Disciples informed



## Regional News:

OUR REGIONAL BOARD VOTED TO SUSPEND ALL EVENTS HOSTED BY THE REGION THROUGH APRIL 30<sup>TH</sup>.  
THE REGIONAL BOARD WILL MEET ON SATURDAY, MAY 2<sup>ND</sup>, TO REVIEW HOW WE WISH TO MOVE FORWARD FOR MAY.  
THE MAY 1<sup>ST</sup> EDITION OF E-UPDATE WILL HAVE MORE INFORMATION.

## COVID-19 NEWS



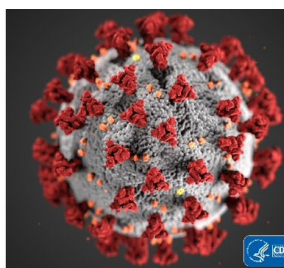
### Hotline

### Free legal help hotline available for Nebraskans affected by COVID-19

If you are a Nebraskan facing legal issues related to the virus, or the owner of a small, locally owned business (defined by less than 50 employees, not a franchise) that is currently closed, in risk of permanent closure due to the virus, and where the payment of fees would significantly deplete your resources, the Hotline may be reached at **1-844-268-5627**.

### COVID-19: Small Business Guidance & Loan Resources

[sba.gov/coronavirus](https://sba.gov/coronavirus)



### CARES Act Funding

### PLEASE SEE EMAIL Sent April 6<sup>th</sup> to ALL Clergy with Standing

*If you would like to receive the information, as well, please email Chris at [regmin@ccnebr.org](mailto:regmin@ccnebr.org)*



### RESOURCES FOR LOCAL CHURCHES DURING COVID-19

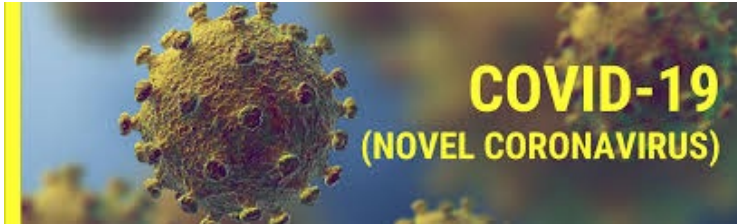
[CLICK Here for a succinct listing of General Church support for Local Churches](#)

---

This is a **NEW** addition to the COVID-19 page. This is also the same information sent out by the General Church in the April 6<sup>th</sup> News.



+Household Solidarity Grants for Income Loss are available to Disciples of Christ congregations on behalf of members and pastors who are experiencing significant financial hardship. Eligible households must have lost wages due to COVID-19 (illness, protective social measures, or reduced hours/gigs) and must not be eligible for state unemployment insurance (USA) or the GSTC (Canada). Additional funds are available for households that do not qualify for federal stimulus benefits. (This application is also in Spanish and Korean should you need it.) For more information, email Week of Compassion at [info@weekofcompassion.org](mailto:info@weekofcompassion.org)

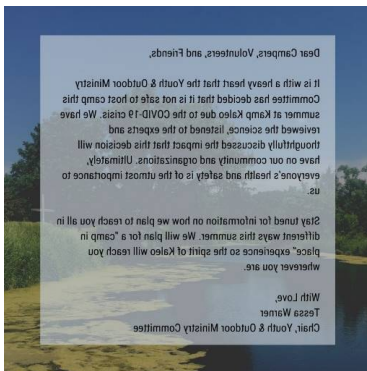


**COVID-19  
(NOVEL CORONAVIRUS)**

## Preparing Your Congregation -

UPDATED APRIL 1, 2020!! [VISIT the Regional Church's Website for Resources](#)  
[VISIT the General Church's Website for Additional Resources](#)

## SUMMER KAMP NEWS



### 2020 Summer Camps Cancelled

YOMC adds, "We know this is very tough news for everyone gearing up for the 2020 camping season, and our hearts are broken for those of us who were looking forward to another summer at camp. We are actively working on ideas and plans for a "camp in place" experience utilizing a variety of online medias and systems of connection. After all, a church is not the building but the people and the connections we make there with God and with each other. We know it won't be the same as getting to spend a week in that sacred space, but we hope that in such a time as this, we will be able to come up with something that can bring some Kaleo to you wherever you may be this summer."

The Christian Church In Nebraska's Regional Board's Executive Committee met this morning to affirm the Youth & Outdoor Ministries Committee's recommendation to not host camps in 2020.

## IMMIGRATION

### Meet Natalie Teague, Immigration Legal Counsel

The Disciples Legal Counsel is available:

- ❖ Seminarians and College Students on Student Visas
- ❖ Workers with Work Visas who face potential furlough



- ❖ Applicants for Citizenship while US-CIS offices are closed to the public
- ❖ DACA Students
- ❖ Families in Detention Centers

Reach Natalie: [disciplesimmigration.org](http://disciplesimmigration.org), or on Facebook at "Disciples Immigration Legal Counsel," or [natalie@disciplesimmigration.org](mailto:natalie@disciplesimmigration.org)

## GENERAL CHURCH



### *Clergy and Chaplains*

#### PRAY WITH OUR GENERAL MINISTER & PRESIDENT

Rev. Teresa Hord Owens

Fridays at 1:00 pm EDT (12:00 pm CDT/11:00 am MDT)

NEXT TIME OF PRAYER, Click the Following Link: [April 24 link](#)

➤ THE FIRST TIME OF PRAYER: March 20<sup>th</sup>: <https://www.youtube.com/watch?v=sLmO21OVCE4&feature=youtu.be>

Join the  
GMP in  
prayer

WEDNESDAYS IN APRIL  
NOON EDT  
ON FACEBOOK LIVE

@Teresa Hord Owens

### *Members and Friends of Disciple Churches*

#### PRAY WITH OUR GENERAL MINISTER & PRESIDENT

Rev. Teresa Hord Owens

Wednesday at 12:00 pm EDT (11:00 am CDT/10:00 am MDT)

CLICK THE FOLLOWING LINK TO JOIN: <https://www.facebook.com/teresa.h.owens.50>



## DISCIPLES MISSION FUND

As you are able, please continue to make contributions to DMF  
Your Regional Church and General Church Ministries rely upon  
Local Church support



## RESOURCES:

### 2020

### [Click here > Online Pray for List 2020!!](#)

April 19  
April 26

Falls City First Christian Church  
Grand Island First Christian Church

Rev. Fay Ann Blaylock  
Rev. Julie Western

May 3  
May 10  
May 17  
May 24  
May 31

Hastings First Christian Church  
Havelock Christian Church, Lincoln  
Humboldt Christian Church  
Kamp Kaleo on the River  
Iglesia Discipulos, Omaha

Rev. Dustin Bower  
Rev. Rob Welch  
Rev. Howard Blecha  
Staff, Campers and Counselors  
Rev. Daniel Zapata

June 7  
June 14  
June 21  
June 28

Cotner College Educational Lay Ministries  
Lincoln First Christian Church  
CCN Ministry Coordinators  
Minden First Christian Church

ELM Program  
Rev. Dr. Karen Moritz  
Teresa Olberding, Paul Few & Holly Gage  
Rev. Joe Tira

---

### Regional Office Calendar:

APR 21 Regional Staff Meeting via Zoom  
APR 23 Regional Board Budget & Finance Committee Meeting  
APR 28 Retired Clergy Luncheon  
APR 30 YOMC Committee Meeting  
MAY 2 Regional Board meeting via Zoom  
MAY 4-5 PLC Meeting  
OCT 16 – 17 Regional Assembly 2020 (Grand Island, NE)

*-Official Publication of Nebraska Regional Office*

Christian Church (DOC) in Nebraska  
237 South 70<sup>th</sup> Street, Suite 221, Lincoln NE 68510 [adminasst@ccnebr.org](mailto:adminasst@ccnebr.org)